

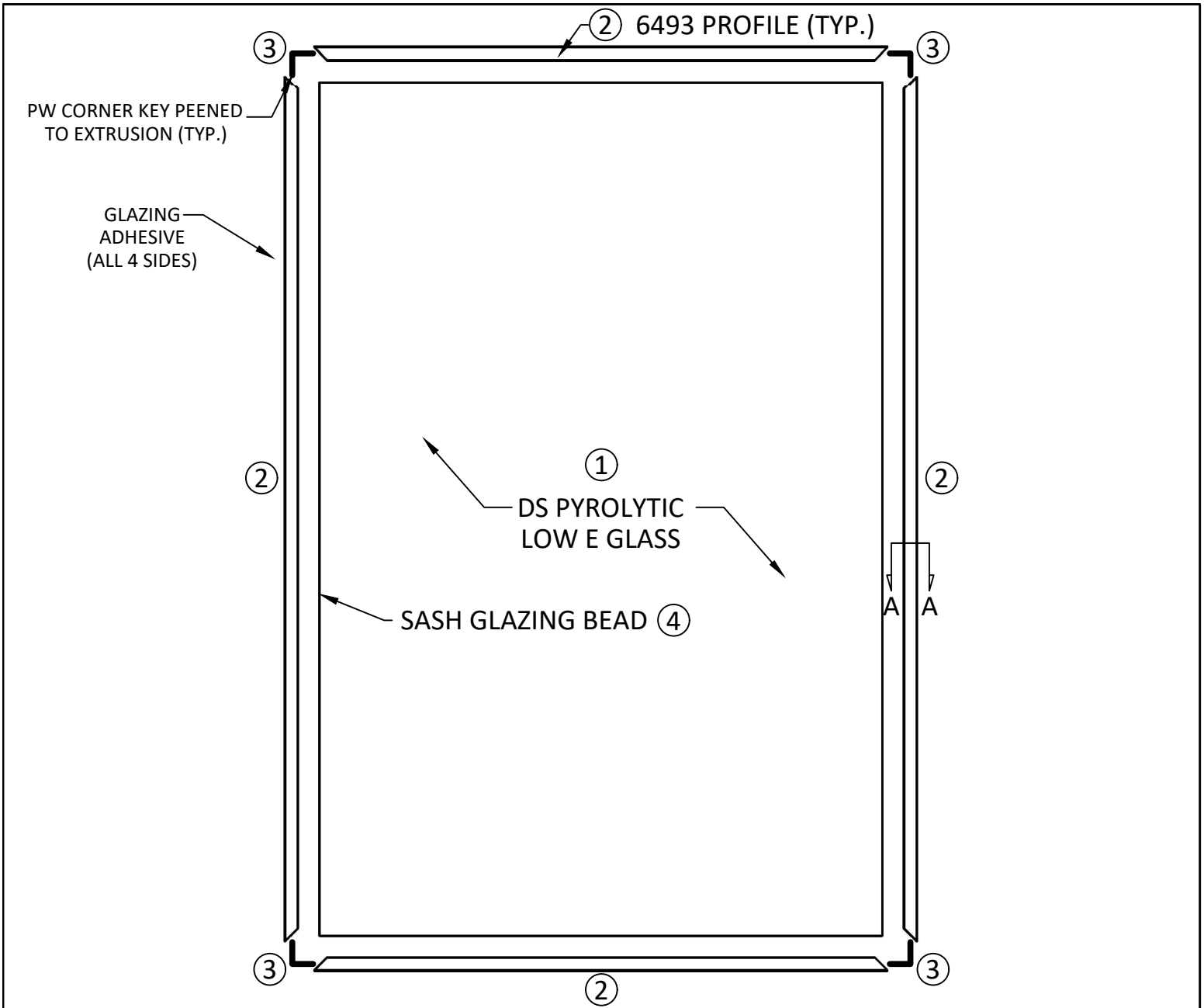
ATTACHMENT DETAIL

1. NORMAL INSTALLATION REQUIRES FIELD-DRILLED HOLES (TO ENSURE ATTACHMENT LOCATION IS APPROPRIATELY ALIGNED TO ATTACHMENT SURFACE). ATTACHMENT HOLES SHOULD BE LOCATED ON THE HEAD, WITH SPACING NOT LESS THAN 10 INCHES APART. INSTALLATION HOLES ON THE LEFT, RIGHT, AND SILL JAMBS SHOULD BE LOCATED 2 INCHES BELOW, AND TWO INCHES ABOVE THE HEAD AND SILL, AND SHOULD BE EVENLY SPACED BETWEEN THESE TWO LOCATIONS TO ENSURE EVEN SPACING NOT LESS THAN 10 INCHES BETWEEN ANY GIVEN ATTACHMENT POINT.
2. FIELD APPLICATION OF CLOSED-CELL HIGH DENSITY POLYVINYL CHLORIDE FOAM SEALANT ON THE FRAME SHOULD BE COMPLETED AFTER HOLES ARE DRILLED.
3. FACTORY SUPPLIED ATTACHMENT SCREWS (#6A X 1-1/2" PAN HD 410 STAINLESS STEEL) SHOULD BE USED TO ATTACH THE FRAME TO THE BLIND STOP (OR OTHER ATTACHMENT SURFACE) THROUGH EACH OF THE ATTACHMENT HOLES

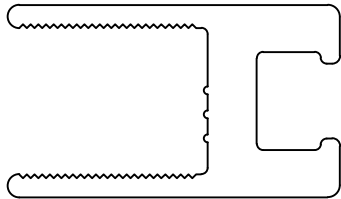
QUANTAPANEL®
 703-FP INSULATING GLASS SYSTEM
 DETAIL - INSTALLED

NOTES:

DATE	08/01/2020
SCALE	1" = 5'
DRAWN BY	R.A.S.



**PICTURE WINDOW
SASH ASSEMBLY**



DETAIL A-A
SCALE 2:1

ITEM No.	ITEM	QUANTITY
1	DS PYROLYTIC LOW E GLASS	1
2	ALUMINUM PROFILE 6493 (AS66483)	4
3	METAL CORNER KEYS	4
4	ELASTOMERIC GLAZING BEAD	4

NOTES:

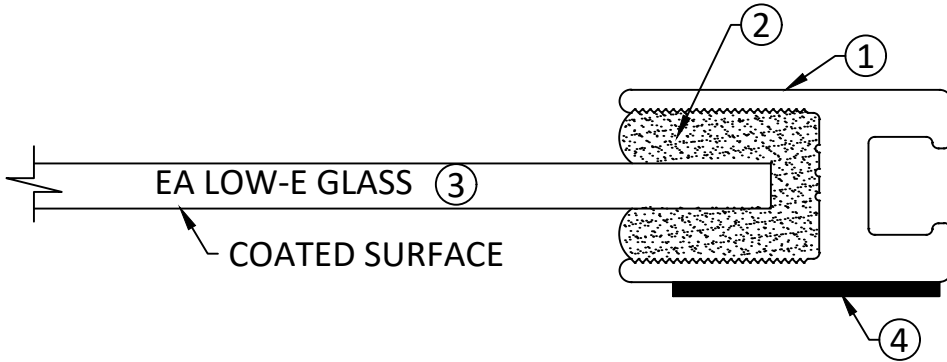
QUANTAPANEL®

INSULATING GLASS SYSTEM
703-FP PICTURE WINDOW
SASH ASSEMBLY

DATE
08/01/2020

SCALE
1" = 10'

DRAWN BY
R.A.S.



ITEM No.	ITEM	QUANTITY
1	SASH EXTRUSION 6493 (AS-66483)	4
2	NEOPRENE BOOT GLAZING	4
3	PYROLITIC LOW-E GLASS (AS SPECIFIED)	1
4	NORSEAL® CLOSED-CELL HIGH DENSITY POLYVINYL CHLORIDE FLOAM SEALANT (FIELD APPLIED, PSA ONE SIDE)	4

QUANTAPANEL®

703-FP INSULATING GLASS SYSTEM

DETAIL - INSTALLED

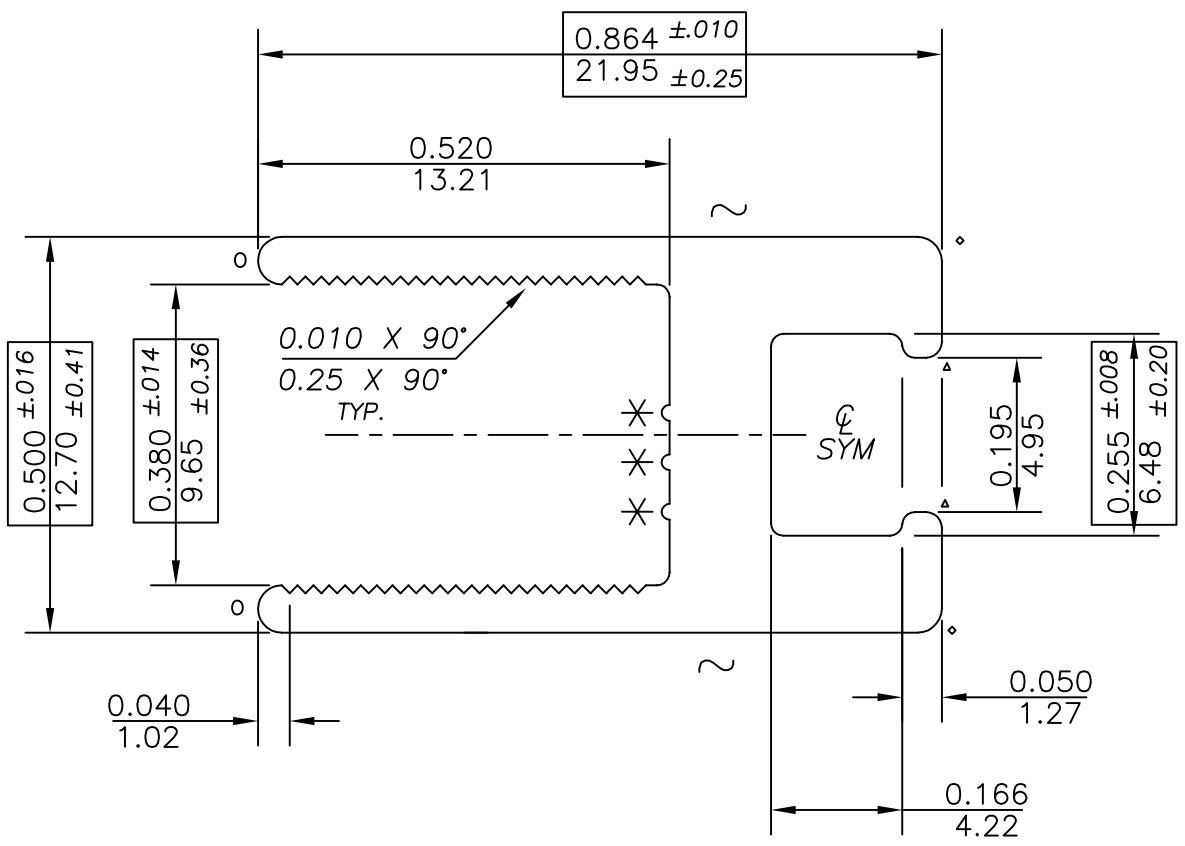
NOTES:

DATE
08/01/2020

SCALE
2:1

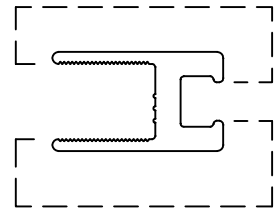
DRAWN BY
R.A.S.

CUSTOMER	QUANTA	PART NO.	6493	DIE NO.	AS-66483	DASH	1
DESCRIPTION:	-	TARRIF#	-	PROPOSAL#	17282-3		
SAPA: 5675 Kennedy Road Mississauga, Ontario L4Z 2H9		DATE	SYM	REVISION			



~ = FLOW LINES MAY APPEAR

EXPOSED SURFACE



EXPOSED SURFACE

ACTUAL SIZE

UNMARKED RADII = RADIUS TO SUIT
 BREAK CORNERS = 0.016 (0.41) R.
 (o) = FULL R.(2)
 (Δ) = 0.020 (0.51) R.(2)
 (◊) = 0.031 (0.79) R.(2)

(*) = 0.010(0.25) R. X 0.010(0.25)H. SAPA I.D. MARKS



UNSPECIFIED WALL THICKNESS
 0.060(1.52)
 ±0.006(0.15)

EST. AREA	0.177	IN ²	114	MM ²	OUT PER.	-	IN	-	MM
EST. WT.	0.212	LBS/FT.	0.316	KG/M	FACTOR	22			
EST. PER.	4.585	IN	116	MM	C.C.D.	0.976	IN	25	MM
DWN BY	JOE	ALLOY	6063-T5	SCALE	4:1	DATE	11-06-21		

BREAK ALL CORNERS .016"R (0.41mm) R UNLESS OTHERWISE NOTED. STANDARD ALUMINUM ASSOCIATION TOLERANCES TO APPLY UNLESS OTHERWISE SPECIFIED